

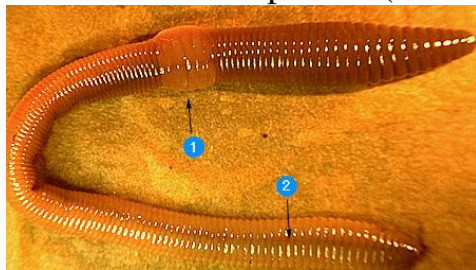
Name _____

Virtual Annelid Dissection

Follow the instructions below carefully. Answer the questions in the packet IN ORDER.

Go to the following website: http://biog-101-104.bio.cornell.edu/BioG101_104/tutorials/animals/earthworm.html

Click on the first worm picture (external, dorsal surface).

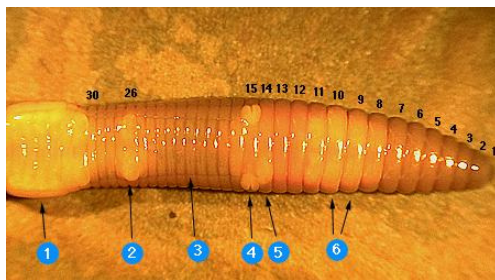


1. What is #1 pointing to? _____

2. What is its purpose? _____

3. What is #2 pointing to? _____

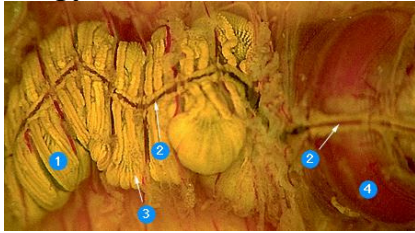
Click on the previous page button. Now click on the picture of the external, ventral surface of the worm.



4. What is #2 pointing to? _____

5. On what segment is it found here? _____

Click on the previous page button. Now click on the picture of internal morphology (overview). Click on the first blue box for a close up.



6. What is #1 pointing to? _____

7. What is #2 pointing to? _____

8. What is #4 pointing to? _____

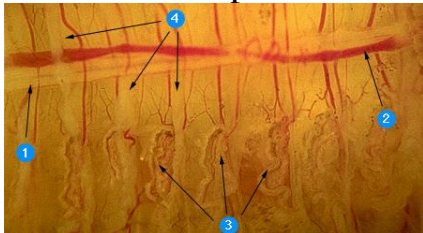
Click on the previous page button. Now click on the third blue box (all the way to the right) for a close up.



9. What is #2 pointing to? _____

10. #1 is pointing to the suprapharangeal ganglia, which is also known as what? _____

Click on the previous button page until you get to the first screen. Click on the picture of the internal morphology (w/o digestive system). Click on the blue box for a close up.



11. What is #3 pointing to? _____

12. What is #4 pointing to? _____

Now go to this website: <http://yucky.kids.discovery.com/flash/worm/>
Click on the link that says “All about earthworms”

13. How many different species of worms are there? _____

14. Name the 7 body parts through which a leaf travels as a worm eats it in order:

Now click where it says “Eddie Earthworm” towards the bottom of the page.
Scroll down to “It’s a Dirty Job.”

15. In at least 4 sentences, summarize (in your own words!) how earthworms help the soil.

16. Explore the rest of the site. Tell me at least 5 other things you learned about annelids.

- _____

- _____

- _____

- _____

- _____
